



Lebanon National Operations Room

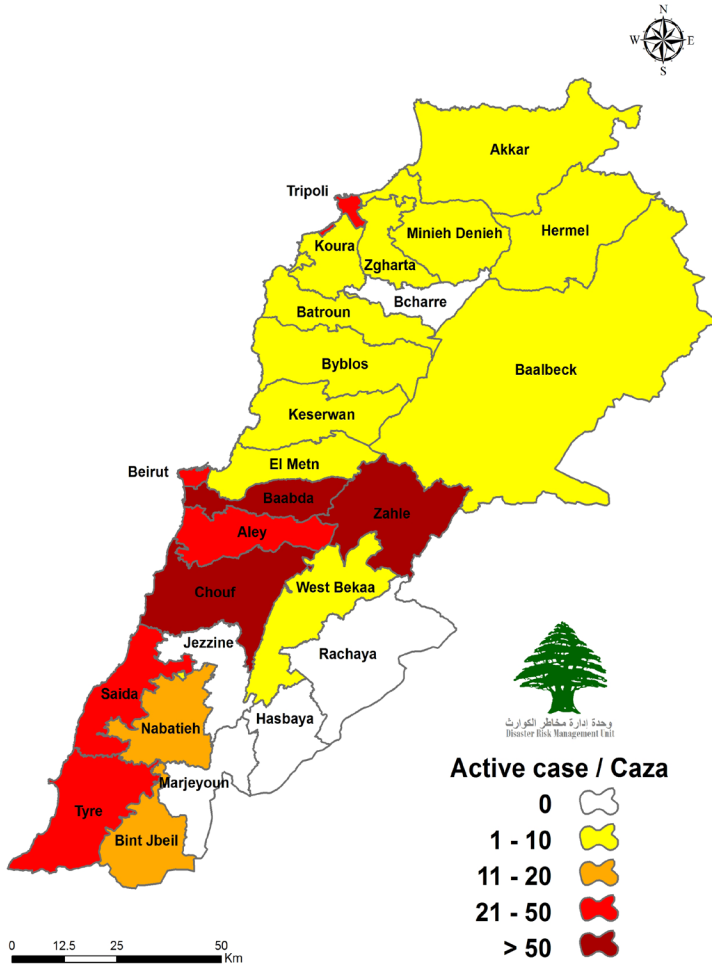
Daily Report on COVID-19

Tuesday, June 24, 2020

Report #97

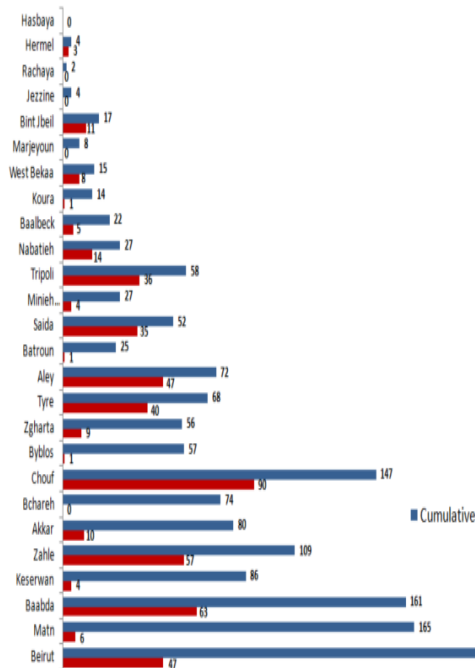
Time published: 18:00

Number of Cases by Location



Active case / Caza

- 0
- 1 - 10
- 11 - 20
- 21 - 50
- > 50



Total registered cases since Feb. 21	1622
locals	1090
Lebanese expats	532
Recoveries	1098
Deaths	32
Total registered cases in the past 24 hrs.	19
locals	12
Lebanese expats	7
Conducted PCR tests in labs since Feb. 21	118,094
PCR tests conducted in the last 24 hrs. (in labs and in the airport)	1454
492 active cases	
438 in home isolation	
54 are currently hospitalized	
45 mild cases	
9 in ICU	



وحدة إدارة مخاطر الكوارث
Director Risk Management Unit

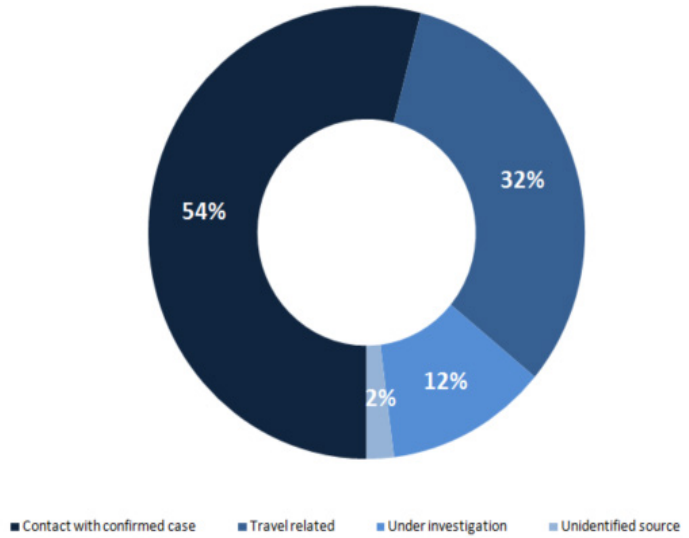
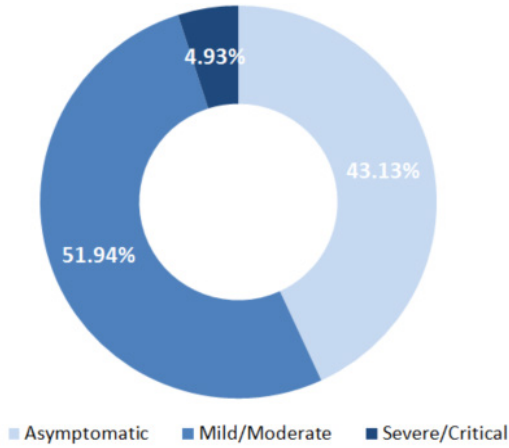
Municipality	Number of cases	Local/Expat
Mazraa (Beirut)	1	Local
Basta (Beirut)	1	Local
Chiyah (Baabda)	1	Local
Mrayjeh (Baabda)	1	Local
Tahwitel El Ghadir(Baabda)	3	Local
Wadi Nahle (Tripoli)	1	Local
El Qobe (Tripoli)	1	Local
Daher El Ain (Koura)	1	Local
Zgharta (Zgharta)	1	Local
Brital (Baalback)	2	Expat
Zrariye (Saida)	1	Expat
Jouwaya (Tyre)	1	Expat
Borj Rahal (Tyre)	3	Expat
Aita El Chaab (Bint Jbeil)	1	Local
Sum	19	

Comparison between Lebanon and other countries

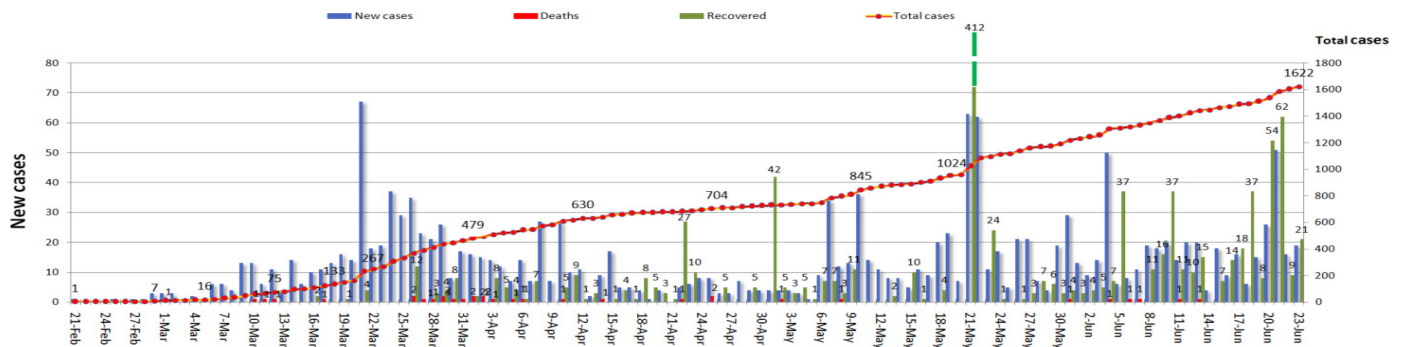
	Lebanon	Internationally
Total registered cases	1622	9,225,827
Total deaths	32	475,076
Percentage of deaths	1.97%	5.14%
Number of recoveries	1098	4,970,687

*the above data was last updated at 4:30 pm

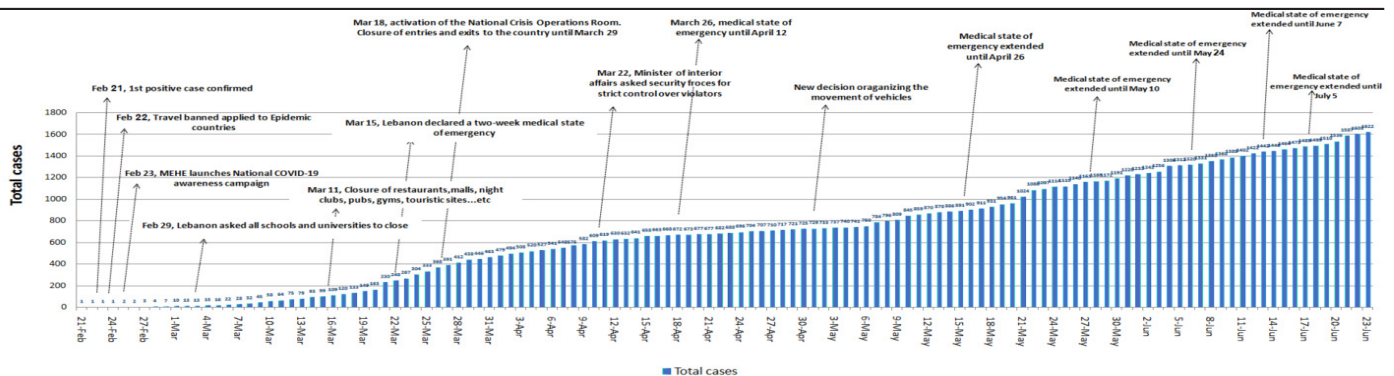
Status of cases	Exposure
-----------------	----------



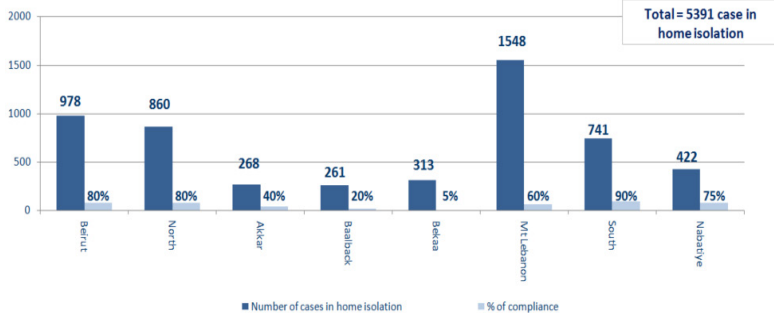
Cases per day



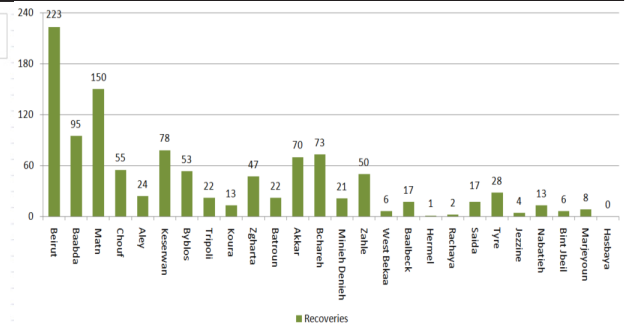
Chronology of decisions according to number of cases



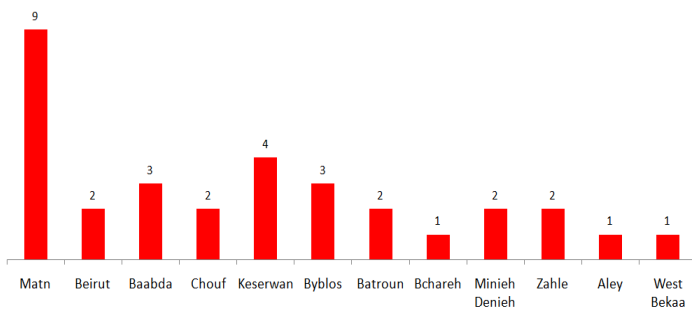
Number of individuals in home isolation and percent- age of commitment to isolation



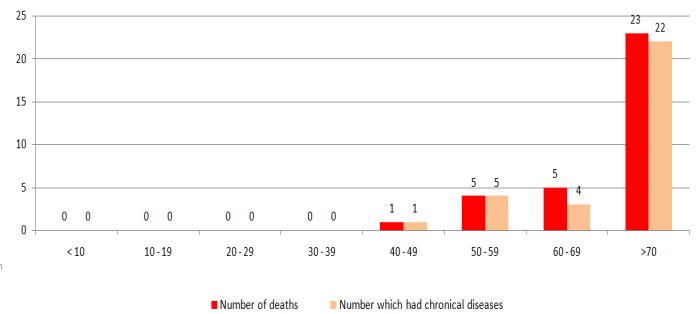
Distribution of recoveries by area



Distribution of deaths by governorates

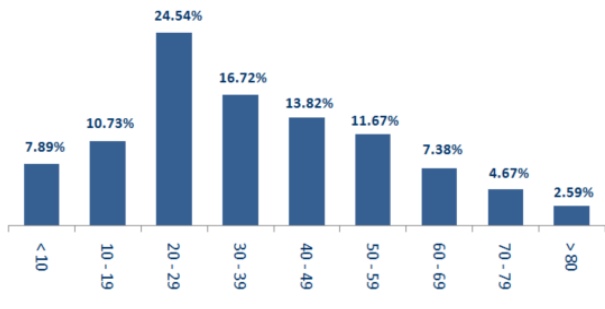


Distribution of deaths by age



Distribution of cases by age group

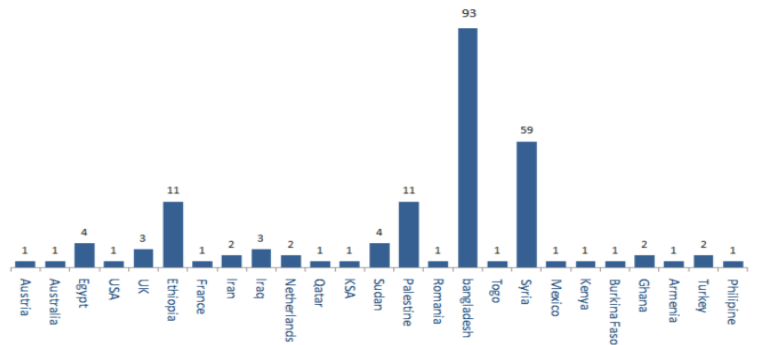
Distribution of cases by age group (%)



Distribution of cases by nationality

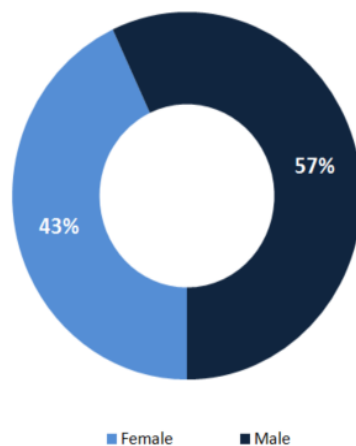
Distribution of cases by nationality

Lebanese: 1413 cases out of 1622 (87 %)



Distribution of cases by gender

Distribution of cases by gender (%)



Examples of lack of adherence of safety measures

- Demonstration, and Roadblocks
- Violations of the car mobility, curfew, and the medical mask decisions
- Failure of commercial stores, supermarkets, and others to comply with the closing hours
- Overcrowding in restaurants and cafes and failure to comply with the permitted number of customers (50%) gatherings in front of banks, money transfer offices and ATM machines without maintaining a safe distance or putting masks
- Gathering of citizens in hiking areas without committing to preventive measures
- Non-compliance of citizens with preventive measures in food markets
- Gathering in cafes
- hookah
- gatherings on beaches and sidewalks without wearing masks.
- Opening of sports clubs and electronic and game stores
- social gatherings and celebrations
- percentage of commitment varies between 5% and 50%



Decisions and actions taken

Ministry of Public Health

- The Ministry is visiting areas where the pandemic has spread to follow up on the implementation of isolation and is following up with Lebanese who have recently returned to Lebanon.
- The ministry supervises all the conducted PCR tests for those who were in contact with positive cases in various government hospitals, at the expense of the ministry in order to determine the epidemiological reality in Lebanon and take the necessary steps.
- Conducting and following up on conducted PCR tests for citizens in various Lebanese regions.

Lebanese Red Cross

24194 new 491	Number of PCR tests transferred to laboratories	0	Number of additional ambulance centers ready to respond	37	ambulance centers	2238 new 21	cases transferred to hospitals
166	Number of volunteers trained to transfer PCR tests	1444	Number of trained paramedics	7584 new 52	total number of respondents	61305 new 329	number of those benefiting from awareness sessions
967	The number of university volunteers trained to follow up on prevention measures in companies and institutions	217	Number of university volunteers trained to conduct awareness sessions	550	total LRC volunteers for covid19	7331 new 63	number of trained managers for isolation centers
3299 new 4	Number of beneficiaries from educational electronic platforms حوّل COVID-19	40572 new 19	Number of distributed equipment **	1203015	total distributed posters, brochures, and flyers on covid19 prevention	340	number of prisons that have been disinfected

* Includes: COVID-19 awareness sessions; awareness about the measures to take when returning to work and advanced training for field workers.

** Includes: medical and sterilization equipment.

Security services (Internal Security Forces, General Security, State Security, Army, General Directorate of Civil Defense)

- The army carried out patrols in different Lebanese regions to disperse gatherings and helped ISF isolate buildings in Barja
- General Security Forces followed up on the airport's set regulations for the return of Lebanese expatriates to their homeland and tracked potential cases in various Lebanese regions and ensured that they're adhering to the terms of home isolation. announced that streets and some buildings in Kayfoun were closed after a number of positive cases in the area were recorded.
- ISF aided Barja municipality in isolating 12 buildings. ISF also issued a number of fines:

fines issued since March 8, 2020		fines issued in the past 24 hours	
3519	institutions	0	institutions
13933	individuals	6	individuals
2592	medical masks since (2020/5/29)	28	medical masks
20044	total	34	total

sonnel and 69 ambulances, to interfere, when necessary, and transport those infected with the emerging coronavirus. The directorate also carried out sterilization missions in public and private areas that were excluded from the decision to close.

- State security forces followed up on positive cases and those in home isolation. announced that work has been resumed in Nabatieh souks.

Ministry of Interior and Municipalities

- Issued circular No. 58 on 20/6/2020 related to amending the opening and closing times of industrial and commercial establishments as well as opening all amusement parks and children's playgrounds, under the condition of adhering to the safety measures.
- Implemented the extension of the general mobilization procedures according to the decision of the Council of Ministers. the general mobilization extension begins on 8/6/2020 and will remain active until 5/7/2020.

Ministry of Education and Higher Education

- Based on the decision of the Council of Ministers, the Ministry of Education and Higher Education issued Decision No. 52/2020 on 22/6/2020 related to the resumption of official and private technical institutes and schools for the academic year 2019/2020. the minister also specified dates for official exams from 1/7/2020 to 8/14/2020.

Other decisions

- the Governor of Mount Lebanon decided to close the financial department of Mount Lebanon and the Real Estate Registry Secretariat and the Department of Surveying in Baabda, after citizens did not adhere to the safe distance and the medical masks decisions. the buildings will be closed for 24 hours until the necessary precautions are adapted.

Ministry of Public Works

- issued decision number 2/26 on 22/6/2020 regarding new regulations that should be followed by all airlines when the airport resumes operations.
- issued decision nb 24/2 on 22/6/2020 regarding the countries that has an approved pcr test by MoPH.

Railways and joint transportation

Borders and Airport

-Transporting those arriving to Lebanon via Rafic Hariri International Airport or Syrian borders to the isolation centers in coordination with the Ministry of Public Health and security forces (25 buses)

Flights arriving	Arrives from	Lebanese citizens on board	Arrival time
MEA	congo	9	00:15
MEA	frankfurt	9	17:20
MEA	dubai	5	14:30
total		23	3
Flights departing	departs to	individuals on board	departing time
skylounge	dubai	1	12:00
MEA	frankfurt	4	10:00
		5	2
Cargo planes	arrives from	carrying	time
qatar	doha	goods	00:45
qatar	doha	goods	15:30
dhl	egypt	goods	21:35
TOTAL			3

Port	entered		left			
	Import	Direction	#	export	Direction	#
BEIRUT	corn	greece		containers	marsin	1
	containers	alexandr				
		on				
BYBLOS	fuel	beirut				
TRIPOLI	containers	beirut				
		4				1